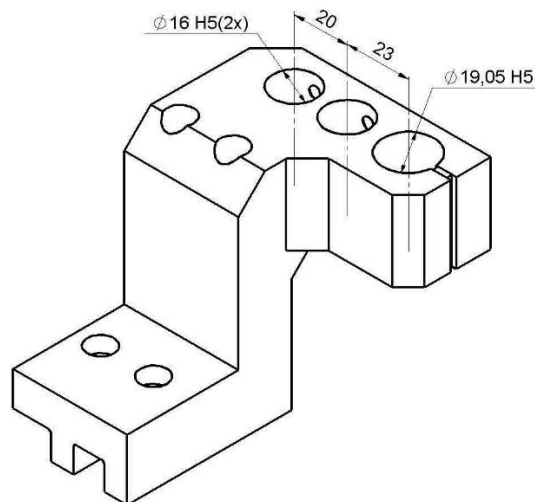


P03-GDF-616-HF

Machine: TSUGAMI

Type: P03

Emplacement, N°: T01 / T02

Travail sur: Broche principale

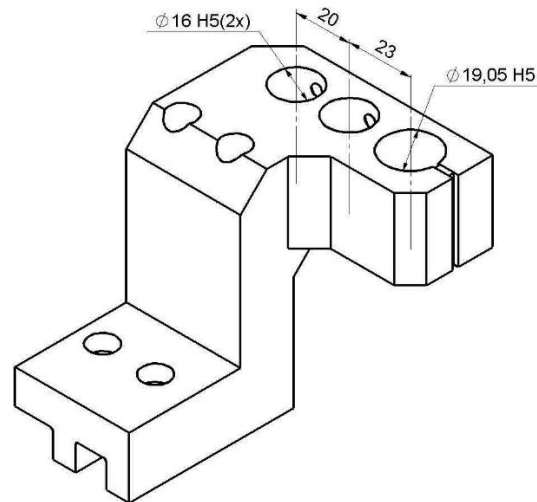
Type de travail:  n_{max} : - [rpm]i (n_i / n_o): -

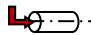
Attachement: -

Sans refroidissement

Infos: Porte-barre d'alésage 2x $\varnothing 16$ + 1x $\varnothing 22$

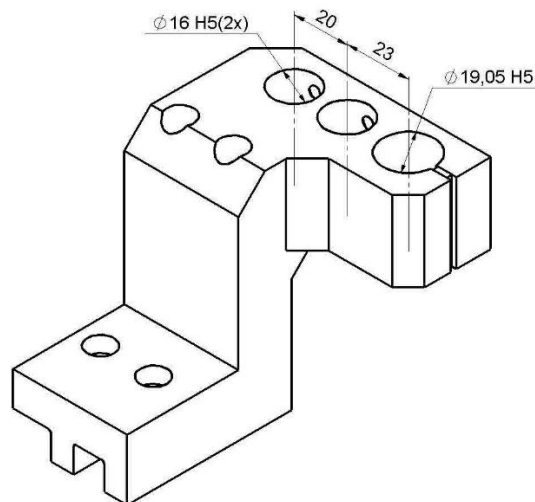
Nakanishi BM319

P03-GDF-616-HF

Machine: TSUGAMI
Type: P03
Location, N°: T01 / T02
Work on: Main spindle
Type of work: 
n_{max}: - [rpm]
i (n_i / n_o): -
Attachement: -
Without coolant :

Infos: Boring bar holder 2xØ16 + 1xØ22

Nakanishi BM319

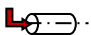
P03-GDF-616-HF

Machine: TSUGAMI

Typ: P03

Position, N°: T01 / T02

Arbeit über: Hauptspindel

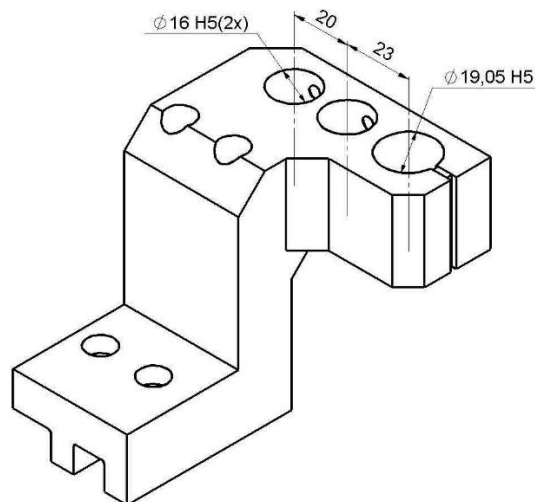
Arbeitstyp:  n_{max} : - [rpm]i (n_i / n_o): -

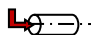
Befestigung: -

Ohne Kühlmittel:

Infos: Bohrstangenaufnahme 2x $\varnothing 16$ + 1x $\varnothing 22$

Nakanishi BM319

P03-GDF-616-HF

Macchina: TSUGAMI
Tipo: P03
Posizione, N°: T01 / T02
Lavoro al: Mandrino principale
Tipo di lavoro: 
 n_{max} : - [rpm]
 i (n_i / n_o): -
Ataccamento: -
Senza refrigerante
Informazioni: Porta-barra di alesaggio 2x $\varnothing 16$ + 1x $\varnothing 22$
Nakanishi BM319