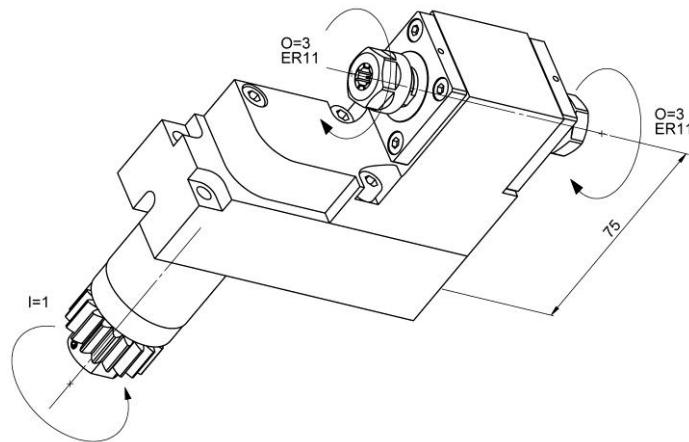


BSE307-3x

Machine: CITIZEN Cincom

Type: L220

Emplacement, N°: Coulisse linéaire / T06 / T07 / T08 / T09

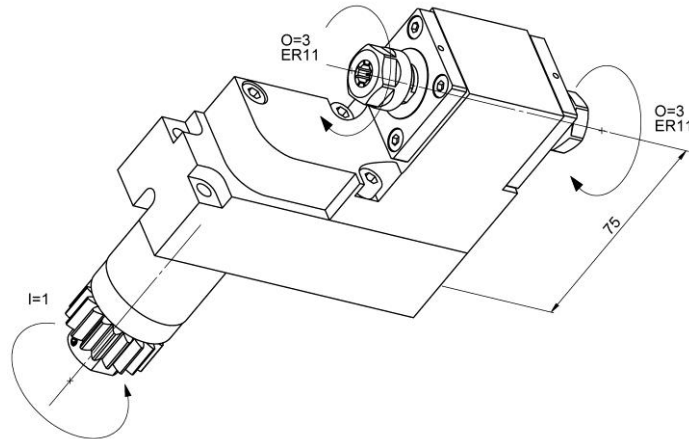
Travail sur: Broche principale / Broche de reprise

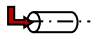
Type de travail:  n_{\max} : 18'000 [rpm] $i (n_i / n_o)$: 1 / 3

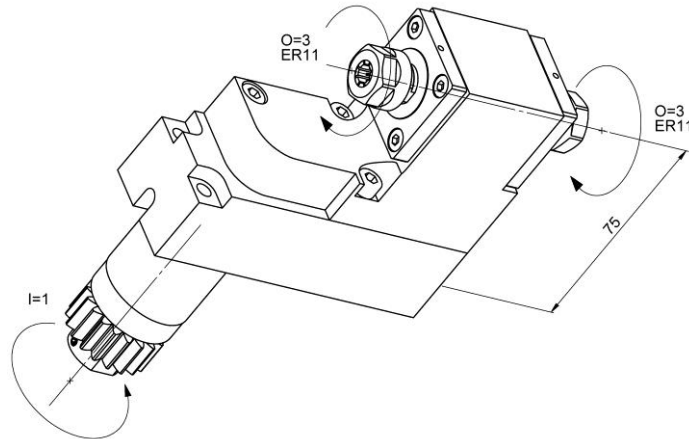
Attachement: ER 11

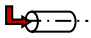
Sans refroidissement

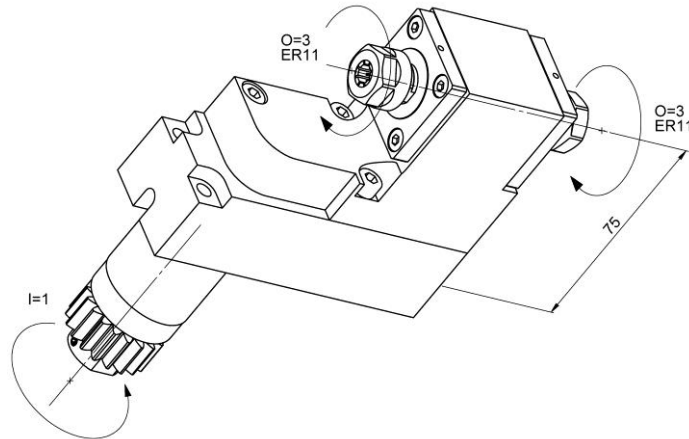
Infos:

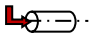
BSE307-3x

Machine: CITIZEN Cincom
Type: L220
Location, N°: Gangtool / T06 / T07 / T08 / T09
Work on: Main spindle / Back spindle
Type of work: 
 n_{max} : 18'000 [rpm]
 $i (n_i / n_o)$: 1 / 3
Attachement: ER 11
Without coolant
Infos:

BSE307-3x

Maschine: CITIZEN Cincom
Typ: L220
Position, N°: Vertikalhalter / T06 / T07 / T08 / T09
Arbeit über: Hauptspindel / Abgreifspindel
Arbeitstyp: 
 n_{max} : 18'000 [rpm]
 $i (n_i / n_o)$: 1 / 3
Befestigung: ER 11
Ohne Kühlmittel
Infos:

BSE307-3x

Macchina: CITIZEN Cincom
Tipo: L220
Posizione, N°: Slitta lineare / T06 / T07 / T08 / T09
Lavoro al: Mandrino principale / Contromandrino
Tipo di lavoro: 
 n_{max} : 18'000 [rpm]
 $i (n_i / n_o)$: 1 / 3
Ataccamento: ER 11
Senza refrigerante
Informazioni: