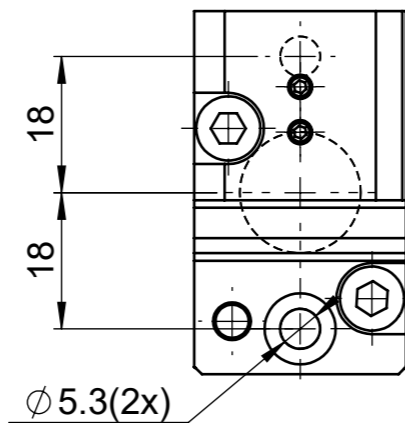
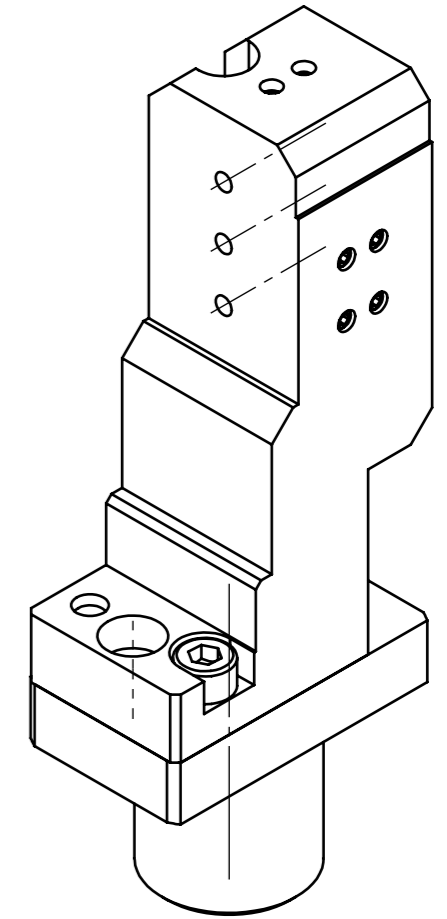
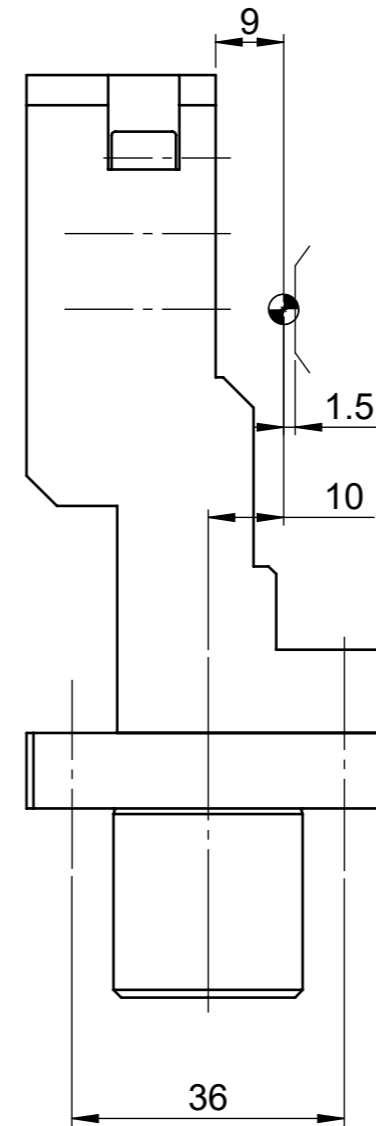
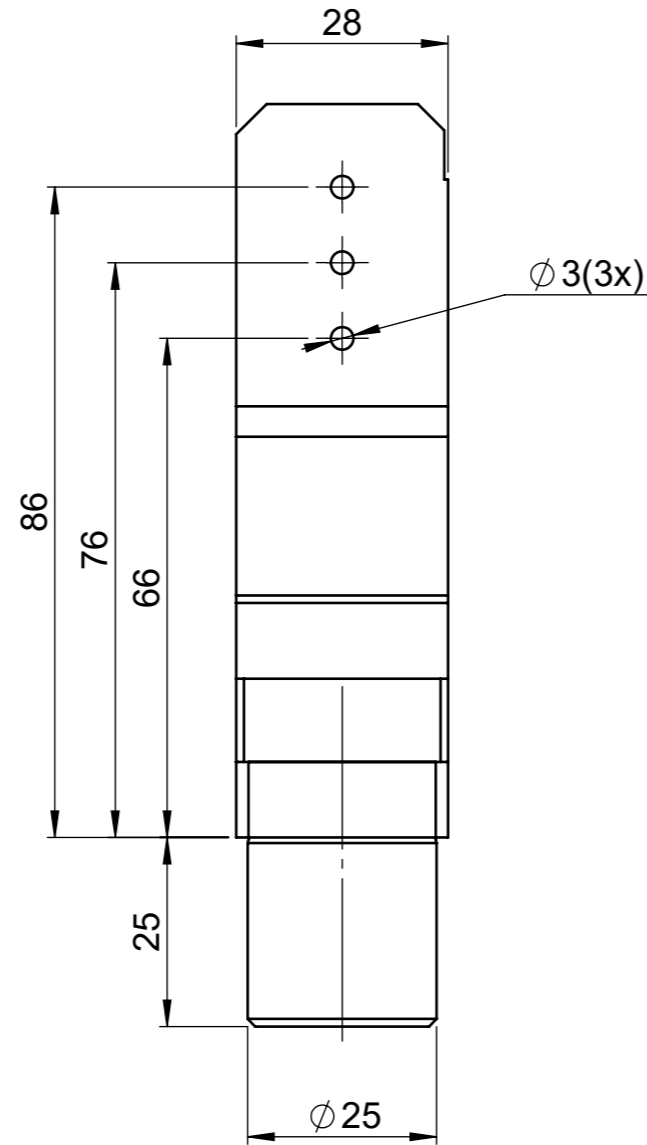
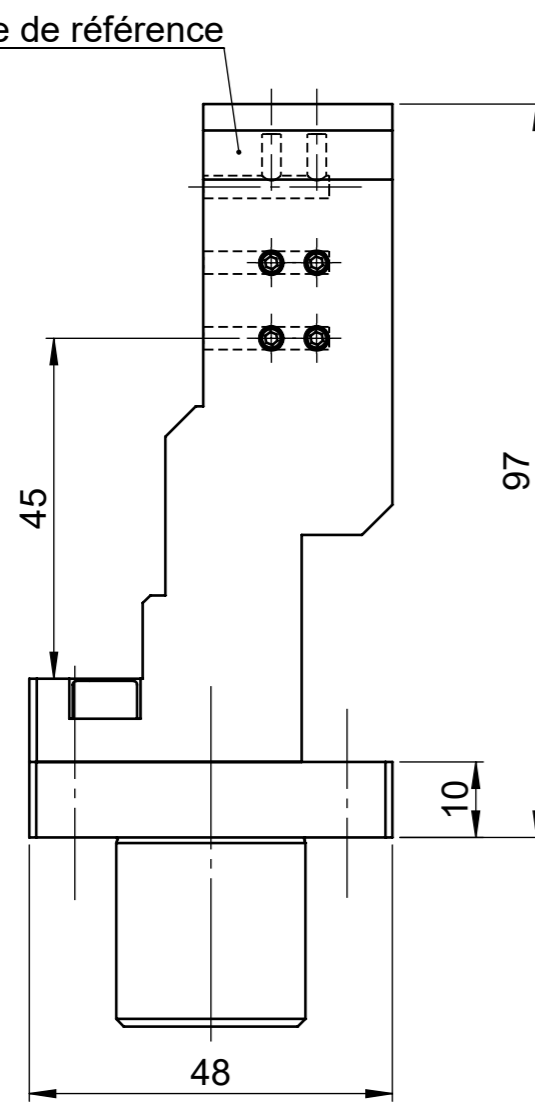


Face de référence



BORING BAR HOLDER
 POSITION : Upper gang tool post
 SHANK Ø : 3xØ3mm (standard)
 COOLANT : No
 MACHINE TYPES : CITIZEN L12-1M7, L12-2M10, M16-4M5/7/8
 INCLUDED: Fastening screw 1x D912 5x12, 1x D912 5x22
 OPTIONS: Internal watering option with M5 connection, see catalogue.

Porte-outil 3x Ø3	© The reproduction, distribution and utilization of this document as well as the communication of its contents to others without express authorization is prohibited. Offenders will be held liable for the payment of damages. All rights reserved in the event of the grant of a patent, utility model or design.	Echelle 1:1	Créé	Pilet	25.02.2026
			Validé	Borgeaud	02.03.2026
GDF9001S33	Révision A	PCM be driven.	PCM Precision Tooling SA +41 21 967 33 66 CH-1844 Villeneuve www.pcm.ch		