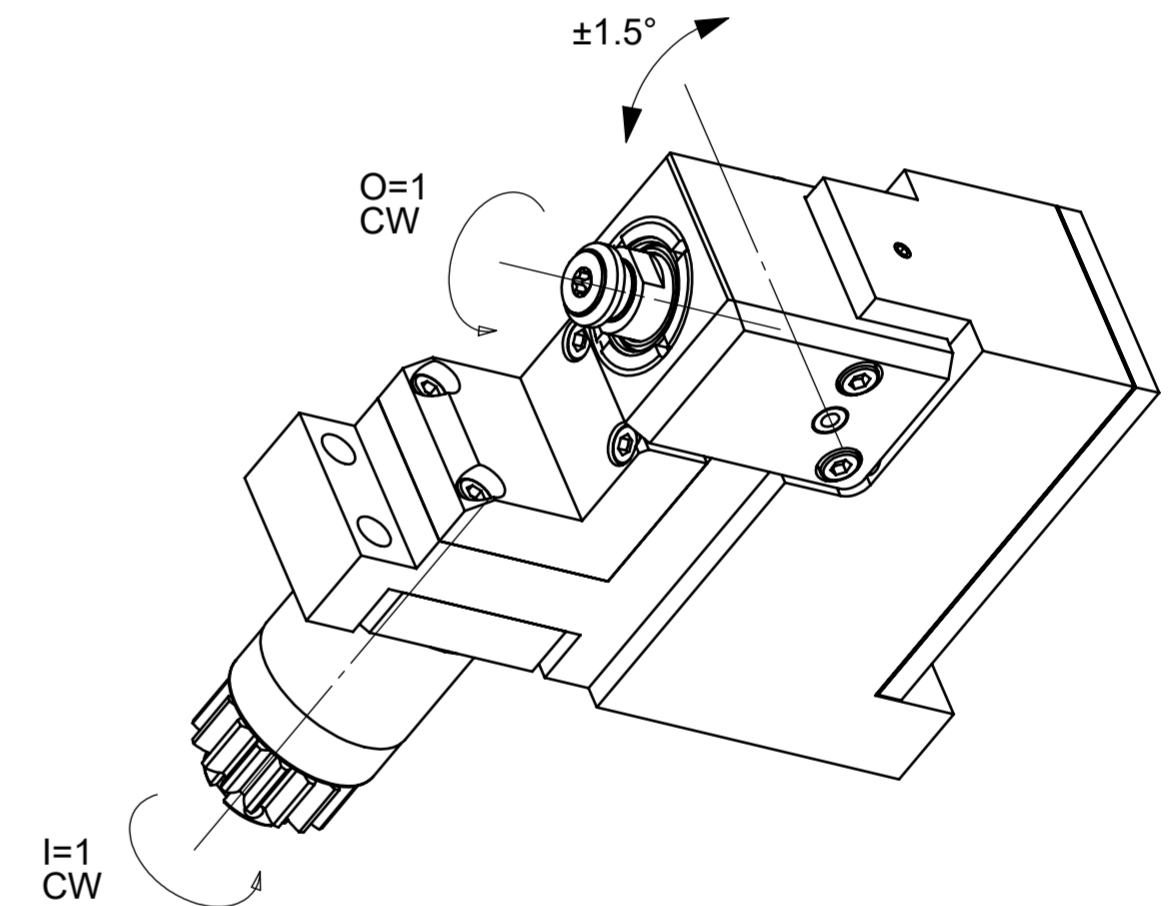
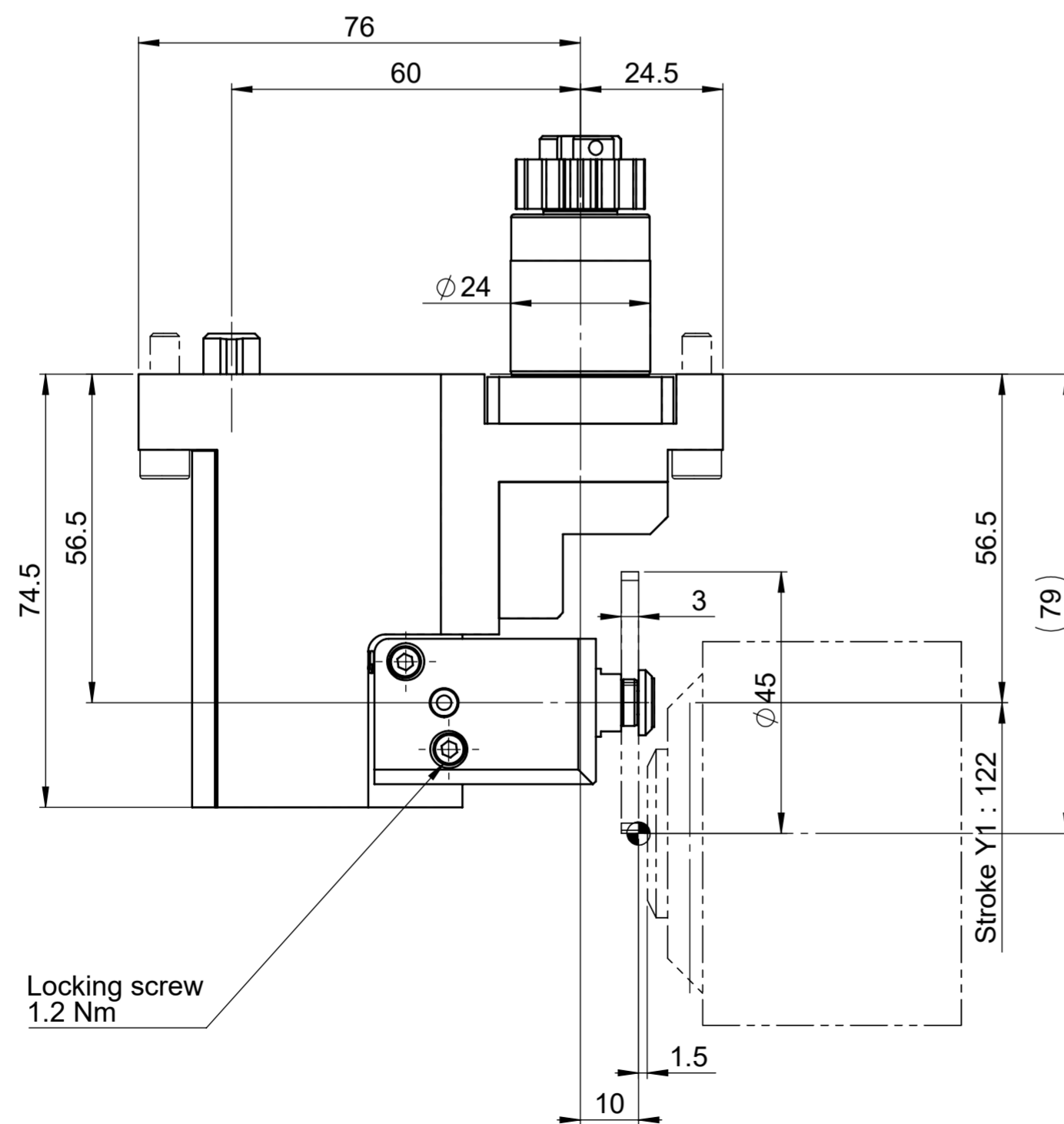



Position T14 on K16E-VII



POLYGON TOOL HOLDER
 ATTACHMENT : Ø8mm
 i (n1:n2) : 1:1
 DEGREE OF INCLINATION : ±1.5°
 POSITION : BACK GANG TOOL POST
 COOLANT : No
 MACHINE TYPES : CITIZEN K12E-VII, K16E-VII

COMMENTS :
 Warning, risk of collision with the guide bush at the end of the stroke.
 Polygon mill not included.
 Ø-mill : Ø58mm max.
 Width of mill cutter : 3mm max.

INCLUDED :
 Fastening Screw : 4x D912 5x20
 Clamping washer : 856-184-35
 Clamping screw : BN4851 M4x20

Porte-outil de polygonage	<small>The reproduction, distribution and utilization of this document as well as the communication of its contents to others without express authorization is prohibited. Offenders will be held liable for the payment of damages. All rights reserved in the event of the grant of a patent, utility model or design.</small>	CITIZEN		
		Echelle 1:1	Créé Validé	Borgeaud Leibundgut
GSP2145	Révision A	 PCM Precision Tooling SA +41 21 967 33 66 CH-1844 Villeneuve www.pcm.ch		