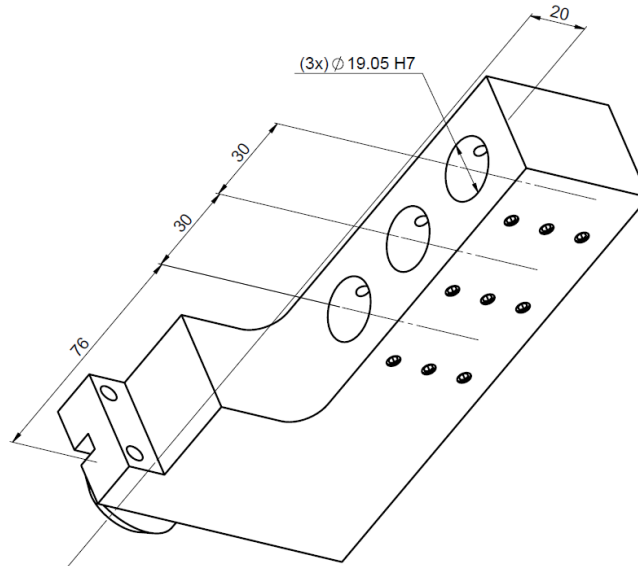


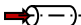
**GDF1207-S**

Machine: CITIZEN

Type: L20E-2M7/L20E-2M9/L20E-2M10/L20E-2M12

Emplacement, N°: Upper gang tool post

Travail sur: Broche principale

Type de travail: 

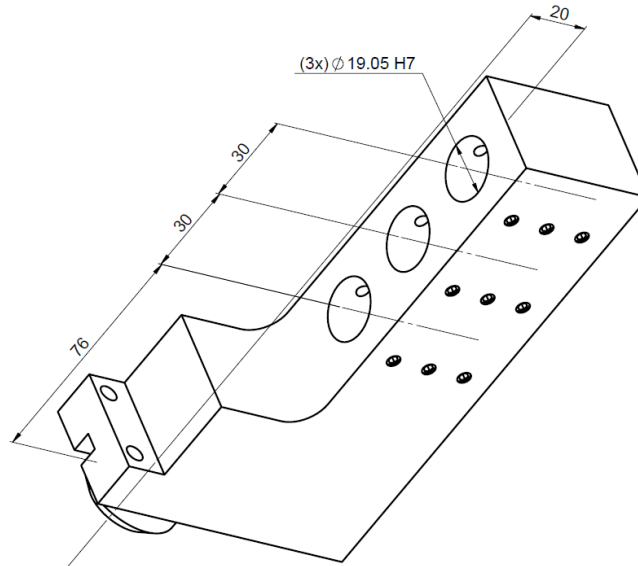
Attachement: 3x Ø 19.05

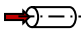
Refroidissement interne optionnel, pression max. 220 bar

## Infos:

Version courte pour outil plus proche du canon principale.

Les couvercles et les conduites haute pression ne sont pas inclus.

**GDF1207-S**

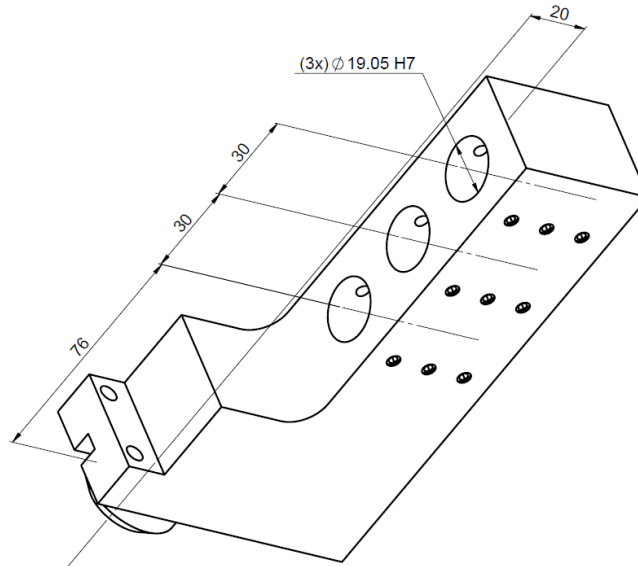
Machine: CITIZEN  
Type: L20E-2M7/L20E-2M9/L20E-2M10/L20E-2M12  
Location, N°: Upper gang tool post  
Work on: Main spindle / Back spindle  
Type of work:   
Attachement: 3x Ø 19.05

Optional internal cooling, max. pressure 220 bar

**Infos:**

Short version for tools closer to the main guide bush.

Covers and high pressure lines are not included.

**GDF1207-S**

Machine: CITIZEN

Typ: L20E-2M7/L20E-2M9/L20E-2M10/L20E-2M12

Position, N°: Upper gang tool post

Arbeit über: Hauptspindel

Arbeitstyp: 

Befestigung: 3x Ø 19.05

Optionale Innenkühlung, max. Druck 220 bar

## Infos:

Kurze Version für ein Werkzeug, das näher am Hauptspindel liegt.

Abdeckungen und Hochdruckleitungen sind nicht enthalten.