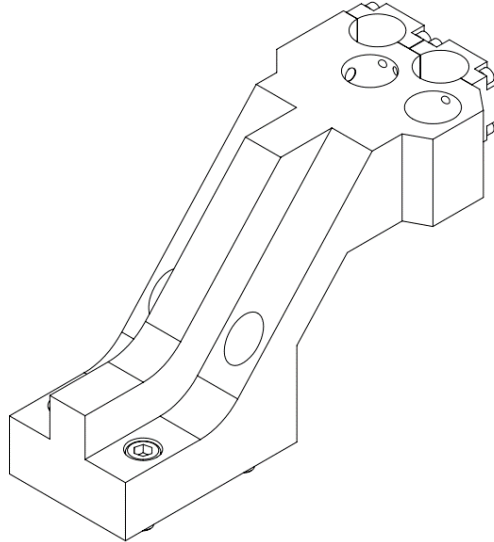


QDF3112-HF

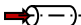


Machine: CITIZEN

Type: R504

Emplacement, N°: Front gang tool post

Travail sur: Broche principale / Broche de reprise

Type de travail: 

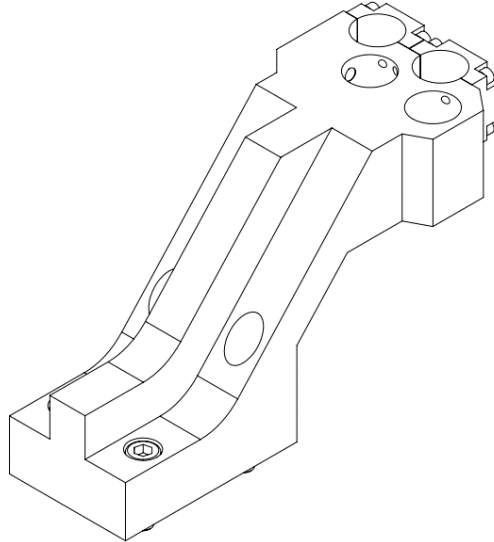
Attachement: 2xØ16 + 2xØ16 HF

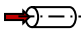
Sans refroidissement

Infos:

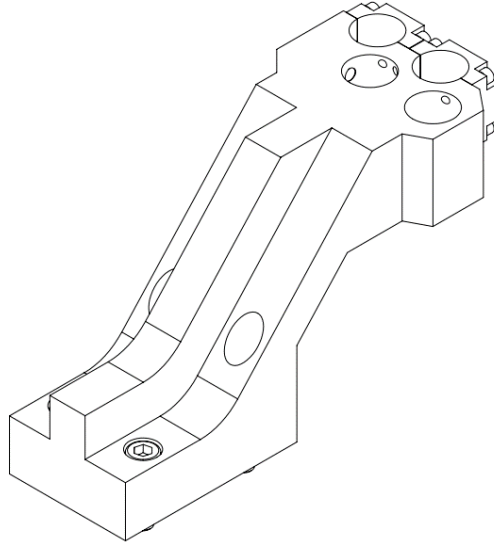
Pour MHF-16 ETA6/80

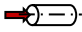
QDF3112-HF



Machine: CITIZEN
Type: R504
Location, N°: Front gang tool post
Work on: Main spindle / Back spindle
Type of work: 
Attachement: 2xØ16 + 2xØ16 HF
Without coolant
Infos:
For MHF-16 ETA6/80

QDF3112-HF



Maschine: CITIZEN
Typ: R504
Position, N°: Front gang tool post
Arbeit über: Hauptspindel / Abgreifspindel
Arbeitstyp: 
Befestigung: 2xØ16 + 2xØ16 HF

Ohne Kühlmittel

Infos:

Für MHF-16 ETA6/80