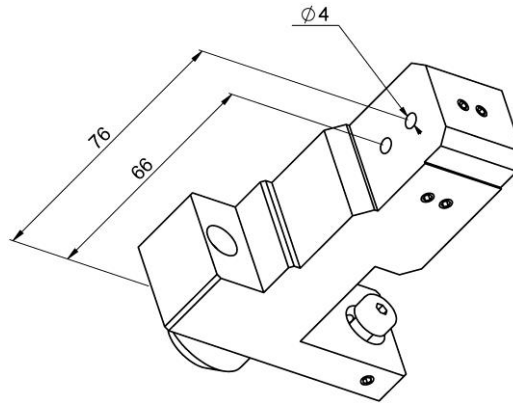


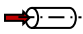
**GDF9001S24-II**

Machine: CITIZEN Cincom

Type: M416-V/VII/VIII

Emplacement, N°: Coulisse linéaire / U33B

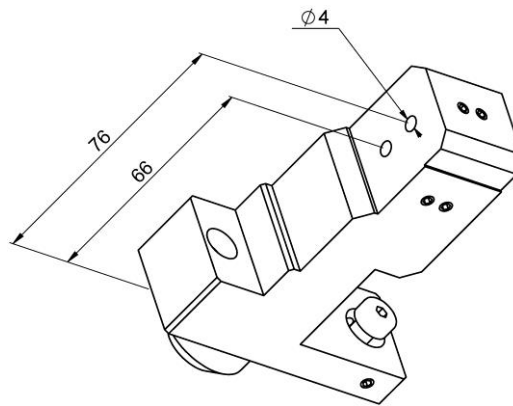
Travail sur: Broche principale

Type de travail:  $n_{\max}$ : - [rpm] $i$  ( $n_i / n_o$ ): - / -

Attachement: 2xØ4

Sans refroidissement

Infos: Porte-outil 2xØ4 orientable

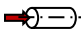
**GDF9001S24-II**

Machine: CITIZEN Cincom

Type: M416-V/VII/VIII

Location, N°: Gangtool / U33B

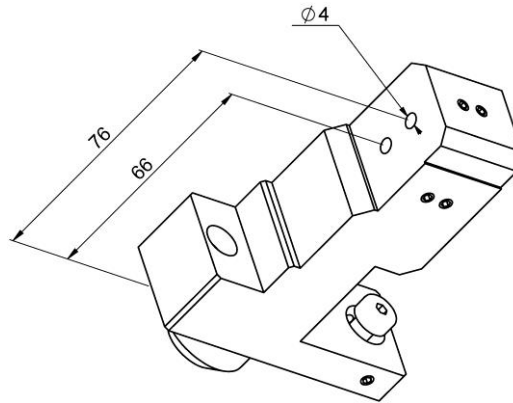
Work on: Main spindle

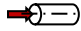
Type of work:  $n_{max}$ : - [rpm] $i$  ( $n_i / n_o$ ): - / -

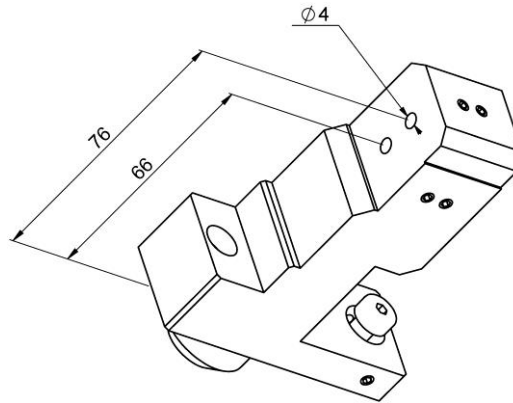
Attachement: 2xØ4

Without coolant

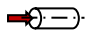
Infos: Adjustable Toolholder 2xØ4

**GDF9001S24-II**

Maschine: CITIZEN Cincom  
Typ: M416-V/VII/VIII  
Position, N°: Vertikalhalter / U33B  
Arbeit über: Hauptspindel  
Arbeitstyp:   
 $n_{max}$ : - [rpm]  
 $i$  ( $n_i / n_o$ ): - / -  
Befestigung: 2xØ4  
Ohne Kühlmittel  
Infos: Verstellbarer Werkzeughalter 2xØ4

**GDF9001S24-II**

Macchina: CITIZEN Cincom  
Tipo: M416-V/VII/VIII  
Posizione, N°: Slitta lineare/ U33B  
Lavoro al: Mandrino principale

Tipo di lavoro: 

$n_{max}$ : - [rpm]

$i$  ( $n_i / n_o$ ): - / -

Atacco: 2x $\varnothing 4$

Senza refrigerante

Informazioni: Porta-ustensile 2x $\varnothing 4$  orientabile