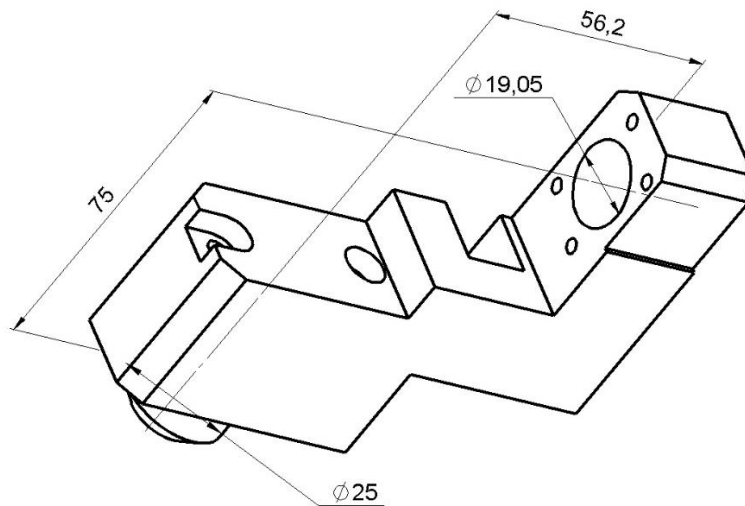


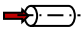
GDF901-HF-19

Machine: CITIZEN Cincom

Type: M416

Emplacement, N°: Coulisse linéaire /T06-09

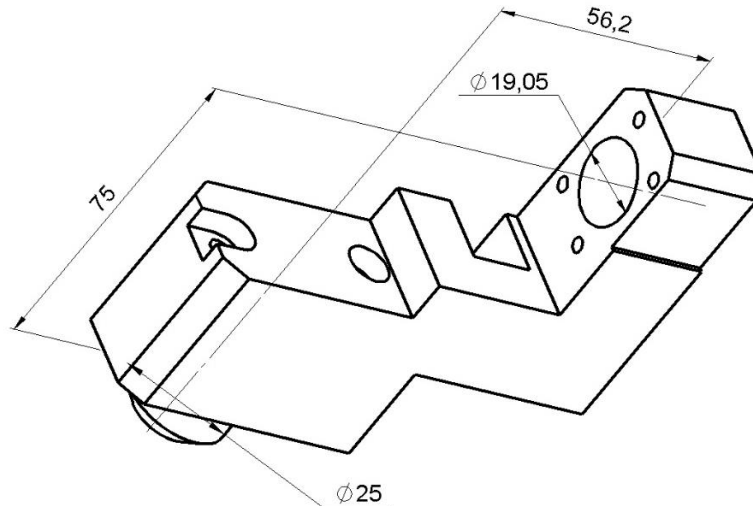
Travail sur: Broche principale

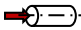
Type de travail: n_{max}: - [rpm]i (n_i / n_o): -

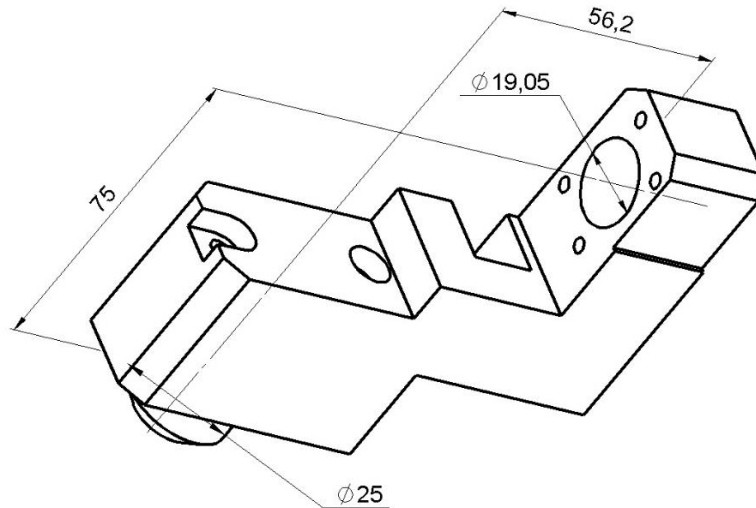
Attachement: -

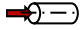
Sans refroidissement

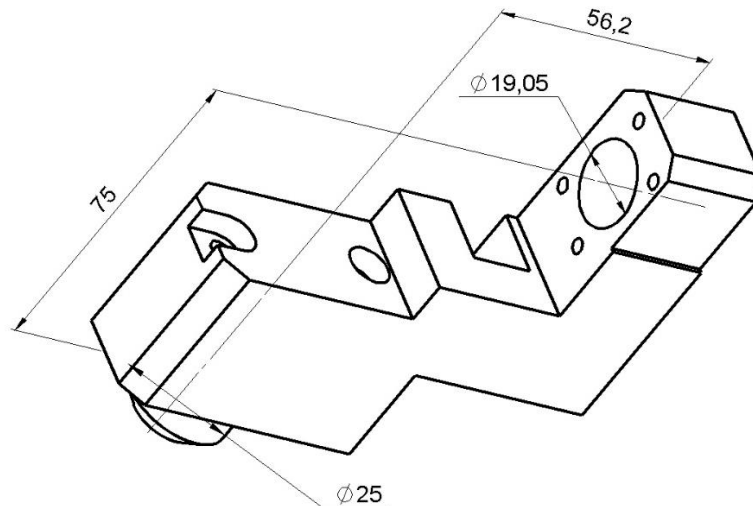
Infos: 4xM4 sur Ø30


GDF901-HF-19

Machine: CITIZEN Cincom
Type: M416
Location, N°: Gangtool / T06-09
Work on: Main spindle
Type of work: 
n_{max}: - [rpm]
i (n_i / n_o): -
Attachement: -
Without coolant
Infos: 4xM4 to Ø30

GDF901-HF-19

Maschine: CITIZEN Cincom
Typ: M416
Position, N°: Vertikalhalter / T06-09
Arbeit über: Hauptspindel
Arbeitstyp: 
n_{max}: - [rpm]
i (n_i / n_o): -
Befestigung: -
Ohne Kühlmittel
Infos: 4xM4 zu Ø30

GDF901-HF-19

Macchina: CITIZEN Cincom
Tipo: M416
Posizione, N°: Slitta lineare / T06-09
Lavoro al: Mandrino principale
Tipo di lavoro: 
n_{max}: - [rpm]
i (n_i / n_o): -
Ataccamento: -
Senza refrigerante
Informazioni: 4xM4 su Ø30